



**Continental Industries**

# GEO-STAB

THE FASTEST AND MOST RELIABLE  
WAY TO INSTALL GEOTHERMAL  
FITTINGS.

# Who is Continental Industries?

- A manufacturer of plastic and steel products geared towards the natural gas, propane and geothermal markets.
- CI has been in business since 1958 out of Tulsa, OK.
- CI sells to 90 of the top 100 gas utility companies in the United States.
- CI has installed over 10 Million stab fittings for natural gas lines since inception.
- CI has been in the geothermal fitting business since 1998.
- CI is a member of IGSHPA.



# Where are GEO-stab fittings used?

**Inside Buildings Application**



**Outside - Underground**



# Comparison of tools required on job site.

## Fusion Equipment Required



## Geo-stab needs only chamfer tool, cutter and marker



# Geo-Stab tools required for typical job: Cutter, Marker, and Chamfer tool.



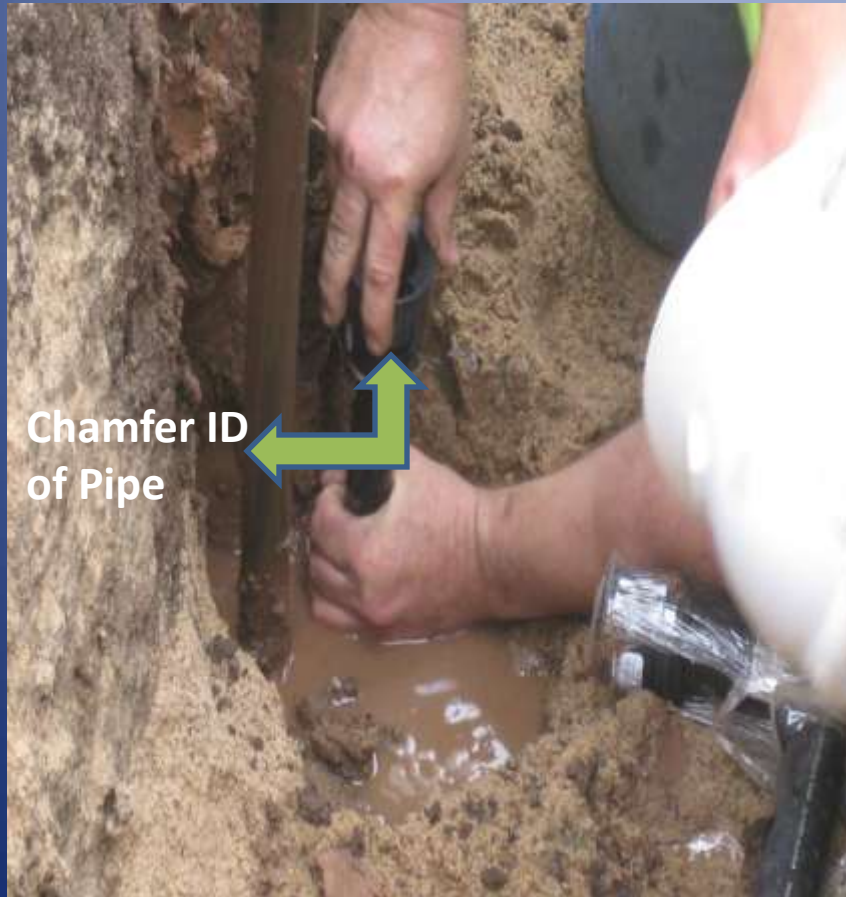
# Comparison on ease of use in tough conditions.



# Geo-stab being installed in tough conditions



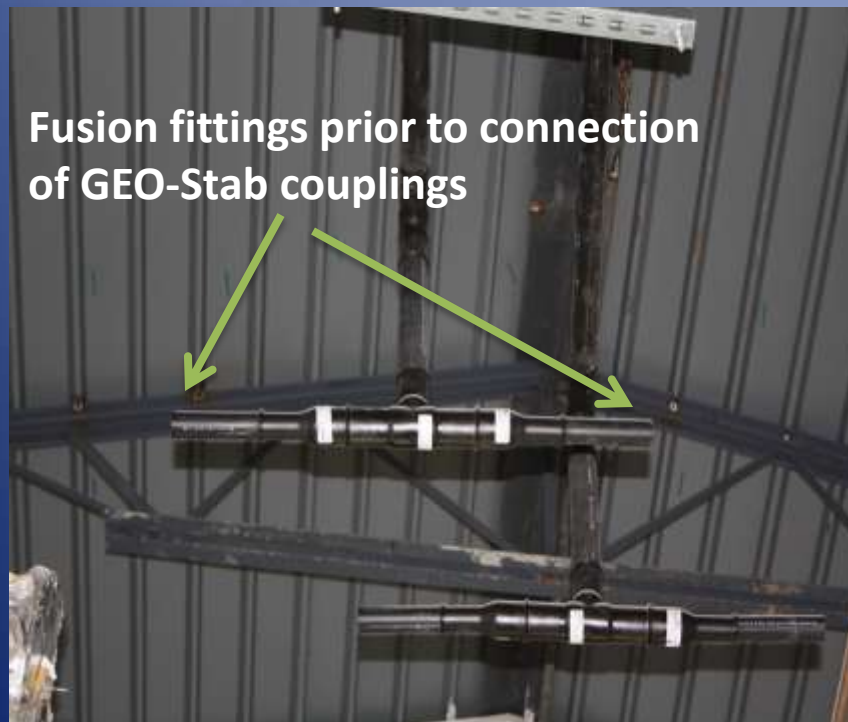
# GEO-Stab connected in wet /adverse conditions.



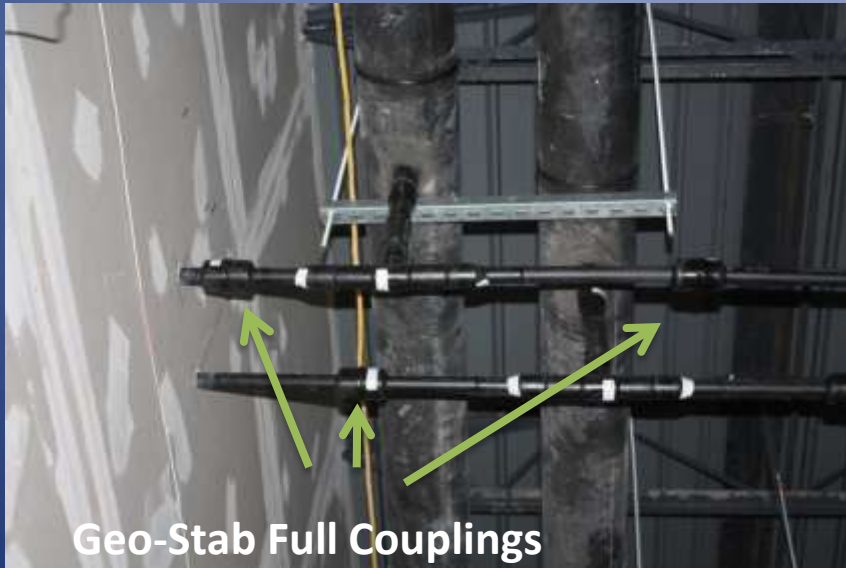
# GEO-Stab complete



# GEO-Stab Full Couplings in use inside building.



# Geo-Stab Full Couplings installed on a inside building on fusion fab



# Geo-Stab Elbows in use



# Geo Vault using GEO-Stab couplings



# Tensile Test – Shows PE pipe will fail before the Geo-Stab



# Is the **Geo-Stab** easy to install?

The Geo-Stab joins pipe in 5 easy steps

1. Cut and clean your pipe
2. Mark your stab depth using CI chamfer tool
3. Chamfer the pipe using CI Chamfer tool
4. Check your chamfer depth with gauge
5. Stab pipe into the Geo-Stab

# FAQ's

**Q. What tools are required?**

A. A Continental chamfering tool , a pipe cutter, cleaning cloth/rag, sharpie or pen.

**Q. Does Continental Industries offer a Warranty?**

A. Yes, Continental offers a 50 year warranty.

**Q. What is the pressure rating for a GEO-Stab?**

A. 160 PSI Max certified working pressure.

# Training Requirements

- **Continental Industries does free training**
- **Training for the entire Geo-stab line takes less than 15 minutes.**
- **Geo-Stab training videos are accessible via YouTube or on Continental's website.**

Geo-Stab can be used in conjunction with Fusion.

## Geo-Stab

- \$ Geo-Stabs need one person to stab the fitting to the pipe.
- \$ Since we are a stab-style fitting we do not require heating time.
- \$ No cool time needed for Geo-Stab.
- \$ No heat needed to join the pipe.
- \$ Geo-Stabs can be used in any weather environment

# Geostab couplings, fittings

