

Train-the-Trainer

As ground source heat pumps capture more of the HVAC market, the need for competent installers increases as an integral part of the growing geothermal industry. Regional trainers are essential if the industry is to provide the necessary GSHP installation workshops for people interested in becoming IGSHPA-accredited installers.

In IGSHPA's Train-the-Trainer Workshop, participants review all the skills involved in GSHP system installation and learn how to teach these skills to others. The five day comprehensive course is taught in conjunction with an Installers' Workshop. The first and second days of the course will cover adult education principles, and program and lesson planning. During the remaining days, trainees will practice presenting lesson plans, and will present a lesson in an actual installation workshop. Participants are taught how to use IGSHPA training aids, such as manuals, videos, sample curriculum, and transparencies used in IGSHPA workshops. With successful completion of the program, participants will receive IGSHPA training accreditation and be able to instruct installation workshops in their home areas.

Courses are taught by industry professionals with expertise ranging from GSHP system design to research. Each instructor is IGSHPA-accredited with years of teaching experience to share. Each participant will also receive a copy of the *Closed-Loop/ Ground-Source Heat Pump Systems Installation Guide*, a presentation manual, and handouts.

Who should attend?

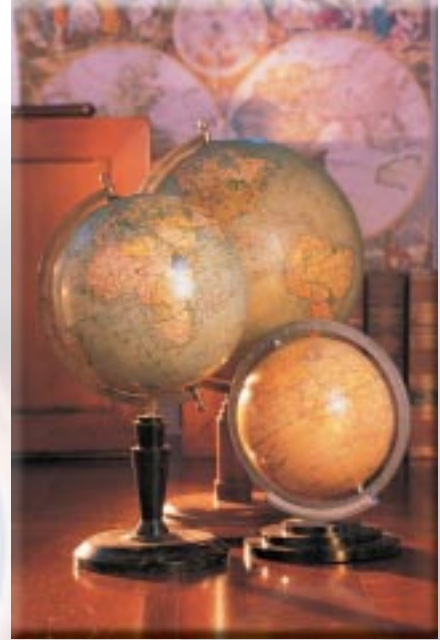
The Train-the-Trainer Program is designed for individuals who are already IGSHPA accredited installers, familiar with GSHP technology, and experienced in its installation and maintenance. Prospective trainers must be confident enough of their knowledge and skills to teach them to others.

Topics

- Training Methods
- Adult Education Processes
- Design and Material Options
- Ground Heat Exchanger Design
- System Layout
- Pipe Joining Techniques
- Air and Debris Purging
- Soils and Rock Identification
- Pump and Fluid Selection

Registration information

You must be an IGSHPA accredited installer to take the course. When you apply, your application will be sent to committee for review. If you are selected to be a course member, you will receive a letter of confirmation with agenda and hotel listings. Before securing travel arrangements, please check the agenda for class times. You will not be charged for registration until your application has been accepted.



Accreditation

Upon successful completion of the training program and passing the IGSHPA Installer's exam, you will be issued IGSHPA accreditation as a trainer of IGSHPA installation workshops. You will receive a trainer's card and a certificate.

Cancellation policy

The full tuition fee may not be refunded unless you notify IGSHPA a minimum number of days in advance. Please refer to the registration form for specifics.

1-800-626-4747

